

FEB/MAR 2016 £4.20/€5.50

DECOR

KITCHENS & INTERIORS

IRELAND'S
STYLISH KITCHEN
AND INTERIORS
MAGAZINE

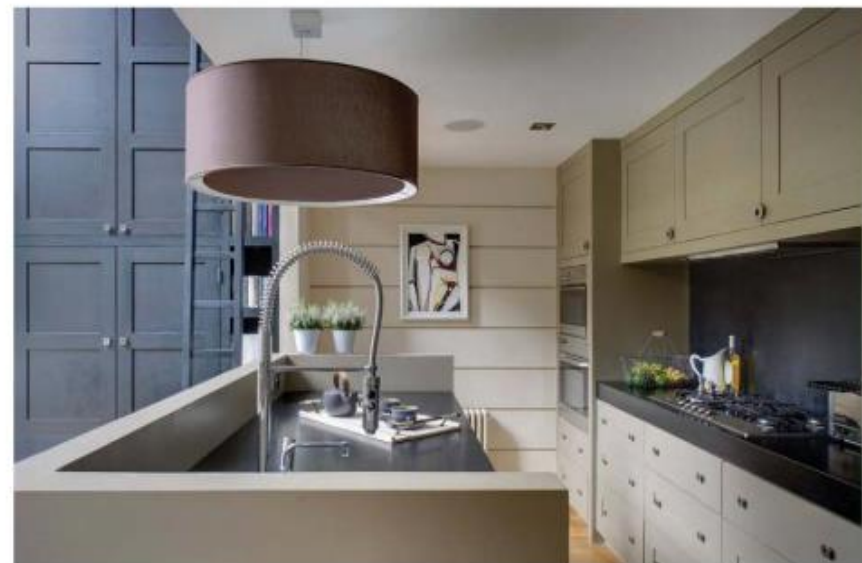
CREATING CONTRAST

IRELAND'S FINEST KITCHENS, GLOBAL INSPIRATION, APPLIANCES
FLOORING, INTERIOR DESIGN, OPEN PLAN LIVING, TABLE LAMPS
2016 FABRICS, EXPERT ADVICE & FINISHING TOUCHES



A TALL ORDER

Benefiting from high ceilings, this London property has been radically transformed to maximise space & light with a dramatic bespoke interior by Cochrane Design



Previously split into four flats, this house presented considerable challenges as the new owners embarked on a substantial project to transform the tall footprint into an elegant and fully functional family house. Although featuring luxurious high ceilings, like many London properties, the interior suffered from a lack of lateral space. Rather than looking at the house as a series of individual floors, Cochrane Design embraced the building's prime feature – its height – cutting through the floors to invite light and open up the space.

The client's brief was for a comfortable interior, glamorous yet understated. The original Victorian character was to be celebrated while bringing the interior into the 21st century with bespoke furniture designs and a contemporary yet classic style. The redesign of the house revolved around the raised ground floor. The

reception is the heart of the house where the whole family can spend time together. Through careful management of space and a restrained but luxurious palette, the reception embodies the client's desire for functionality and style. The seating area precedes a generous dining space suited to family dining and entertaining. This open plan space incorporates a gallery at the back of the house, which overlooks the basement kitchen and garden and floods the space with light. All supporting steelwork is concealed within the floors and ceilings, eliminating the need for structural columns, ensuring no interruptions to the space. Its theatricality is emphasised by a spiral staircase leading down to the kitchen and a paneled wood library, which spans the double height space. Although a bold intervention in a period property, the library injects an element of drama and glamour without compromising the integrity of the house.

Aesthetics do not overthrow functionality as the sliding ladder provides access to high shelving and a compact workstation resides within the lower cupboards.

The kitchen provides informal dining space with enough seating for family and friends. In the summer months, entertaining spills onto the terrace through the large bespoke glass doors. The kitchen features walls embedded with strips of mirrored steel, which echo the classical lines of the house. The kitchen table consists of a large slab of granite, which appears to float in the space. It is supported at one end by only a thin slice of steel with further supports innovatively embedded under the floor. Demonstrating timeless glamour with a touch of decadence, this scheme adheres precisely to the Cochrane Design philosophy of living in and embracing your home in its entirety. cochrandedesign.com

